

IPC Nordic Skiing Percentages Seasons 2008-2010

Class	Classic	Free technique
B1	87%	85%
B2	98%	98%
B3	100%	100%
LW2	91-93%*	86 - 91%*
LW3	87-94%*	80 - 96%*
LW4	96%	96%
LW5/7	79%	87%
LW6	91%	96%
LW8	92%	97%
LW9	85 - 95%*	82 - 96%*

Class	Classic
LW10	86%
LW10,5	91%
LW11	94%
LW11,5	98%
LW12	100%



NOTES:

* For Athletes in this group, please see the percentages listed in the next page.

Bonn 19 October 2008

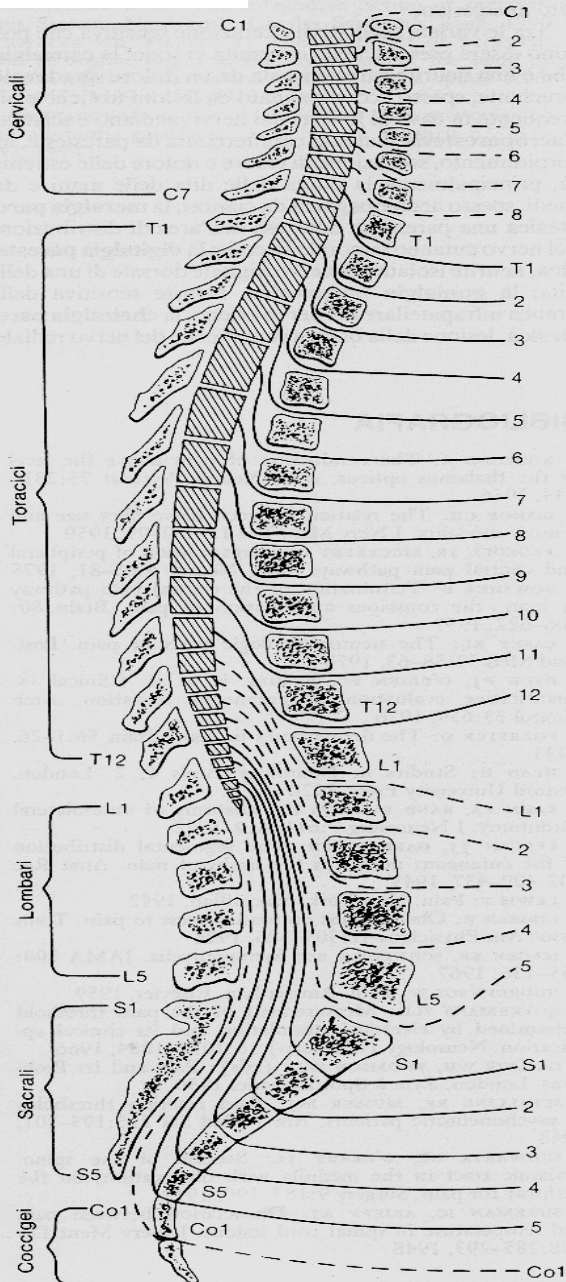
Anne M Lannem

IPC NS STC Head of Classification

Approved by the IPC Nordic Skiing Sport Technical Committee

Functional Classification System for Sit Skiers





LW10: Spinal Cord Injured
 Athletes with impairments in the lower limbs, no functional sitting balance. Athletes with cerebral palsy with disabilities in all four limbs (functional classification), skiing with a sit-ski of their choice.

LW11: Athletes with disabilities
 in the lower limbs and a fair sitting balance. Athletes with cerebral palsy with disabilities in lower extremities, skiing with a sit-ski of their choice.

LW12: Athletes with spinal-cord
 lesion or other disabilities, with some function in the lower limbs and a good sitting balance, skiing with a sit-ski of their choice.

Class	Percentage
LW 10	86 %
LW 10.5	91 %
LW 11	94%
LW 11.5	98 %
LW 12	100 %

Functional Classification and Percentages for Time Correction

Winter Sports Functional Classification

Surname _____

Diagnosis _____

First Name _____

Year of Birth _____

Form. int. Class _____

Country _____

Class _____

Date and place of testing _____

Name of testers

_____ authorized classifier

_____ authorized classifier

_____ athlete/Techn. Spec.

Observation in competition

yes / no

Date _____

Grade	Test
	Test 1: Armfunction
	Test 2a: Keep 45° position forwards
	Test 2b: Keep 45° backwards
	Test 2c: free Rotation
	Test 3: Tilt board sideways
	Test 4: Lift 1 Kg from one side to the other



Grades:

0 = no function

1 = weak function

2 = fair function

3 = normal function

Functional Classification System: Sit Skiers



